

# PRODUCTION SPECIFICATIONS

THE LARGE HALL (STORE SAL)



# Table of Contents

---

|                                     |   |
|-------------------------------------|---|
| Contact information.....            | 2 |
| No smoking .....                    | 2 |
| The Large Hall (Store sal) .....    | 2 |
| Driving instructions: Load in ..... | 3 |
| Load in .....                       | 3 |
| Dressing rooms .....                | 4 |
| Fly bars .....                      | 5 |
| Audio equipment.....                | 6 |
| Ligthing equipment .....            | 6 |
| Power.....                          | 7 |
| dB Limits .....                     | 7 |
| Special effects .....               | 7 |



**Det Musiske Hus**

FREDEKSHAVN

## Contact information

---

Det Musiske Hus  
Rådhus Alle 98  
9900 Frederikshavn  
Tlf.: (+45) 96 20 10 50  
info@arenanord.dk

Technical Manager  
Morten Sønderkov  
Tlf.: (+45) 23 31 28 43  
morten@arenanord.dk

Booking Manager  
Jens-Ole Amstrup  
Tlf.: (+45) 23 23 01 31  
jensole@arenanord.dk

## No smoking

Smoking is not allowed inside Det Musiske Hus at any time.



## The Large Hall (Store sal)

---



1) Theatre Setup:  
Capacity: 424 (seated)



2) Standing Setup:  
Capacity: 900 (standing)

3) Café Setup: Capacity: 296 Total (80 seated at tables) + (216 seated)



## Driving instructions: Load in

From the north of Frederikshavn:

Leave [route 40](#) and turn right onto [Nørregade \(route 35\)](#) for 0,2 kilometres

Turn left onto [Barfredsvej](#) for 1,2 kilometres

Turn left onto [Rimmensgade](#) for 0,35 kilometres

Turn left onto [Rådhus Alle](#) for 0,27 kilometres and you reach Det Musiske Hus (on your right)

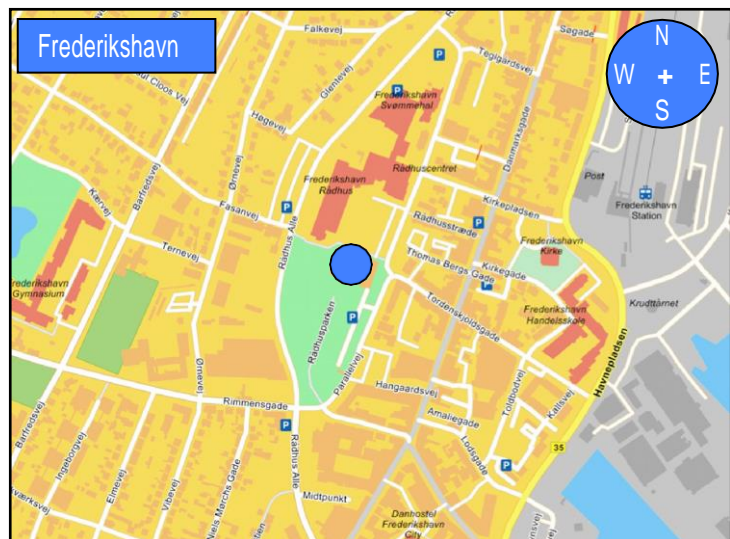
From the south of Frederikshavn:

Merge onto [highway E45](#) and keep left

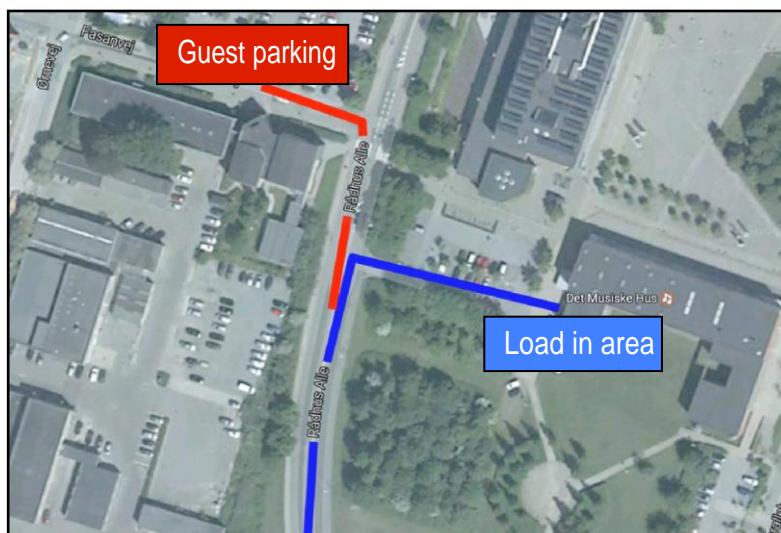
Follow signs for [Frederikshavn/Sæby/Bouet](#)

Continue straight onto [Havnepladsen](#) for 0,15 kilometres

Turn left onto [Rådhus Alle](#) for 0,75 kilometres and you reach Det Musiske Hus (on your right)



## Load in

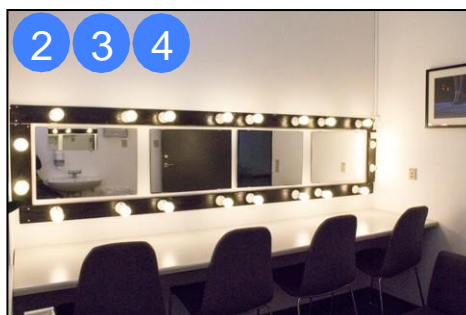
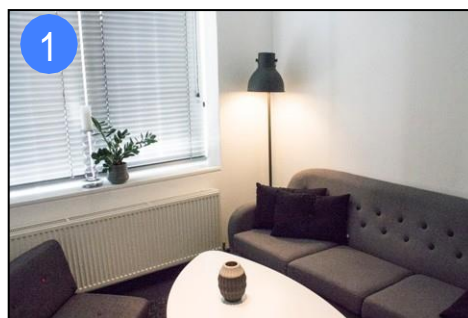
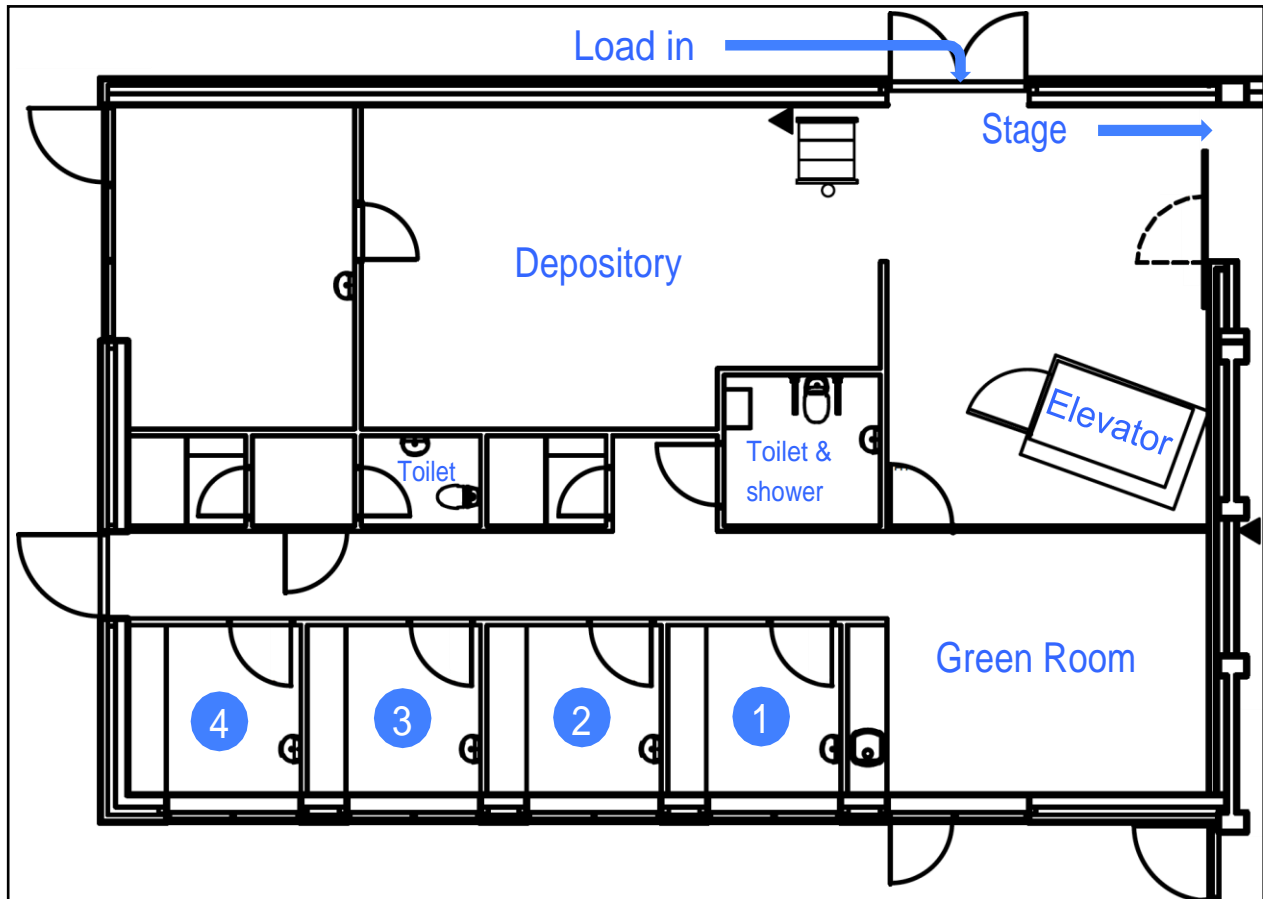


To get to load in area, make sure to turn right on [Rådhus Alle](#) (marked in [blue](#)) and NOT turn left on [Fasanvej](#) (marked in [red](#)) even though it says 'Parking area'. This is for guests, NOT technicians and artists.

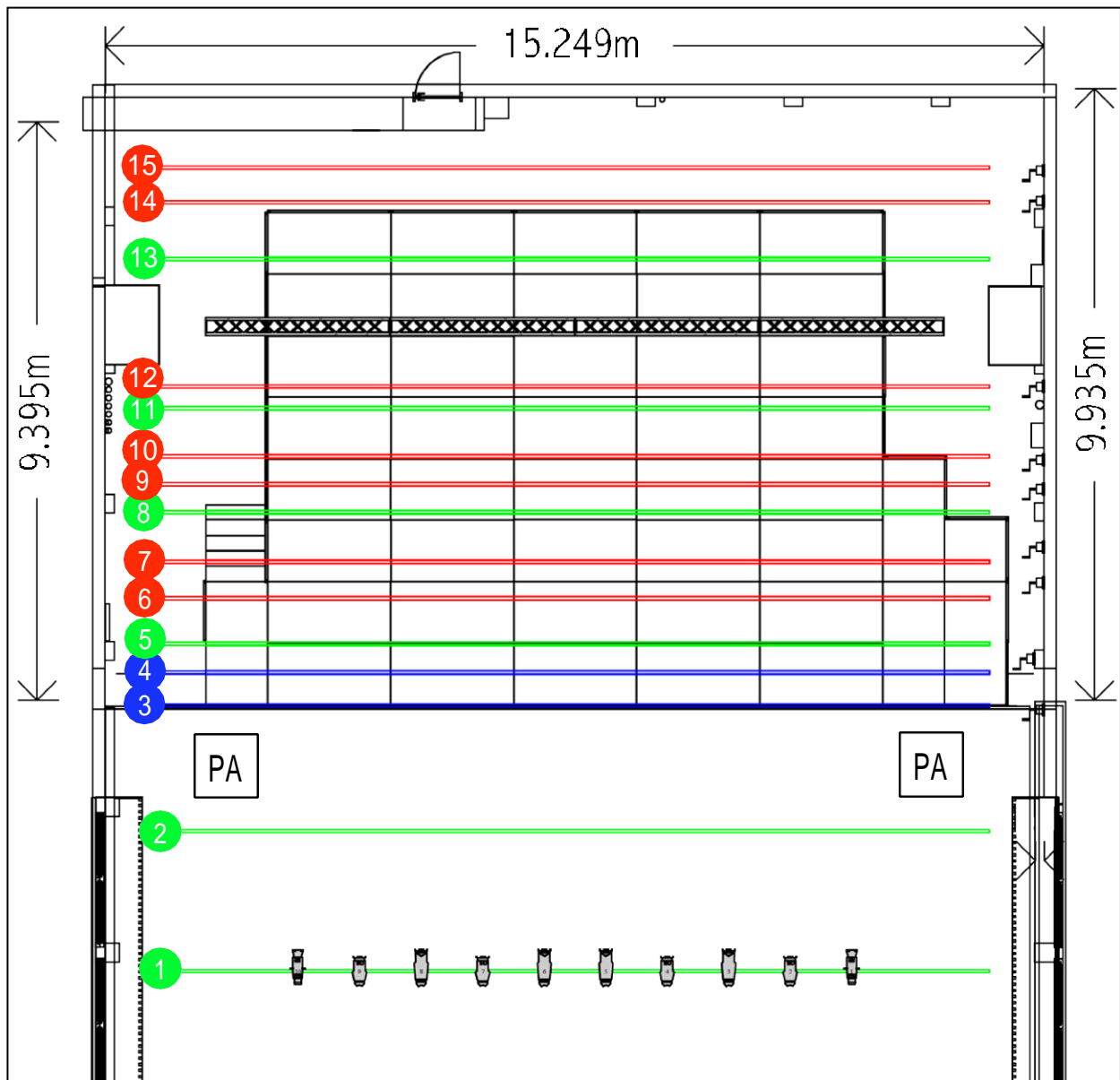
## Dressing rooms

A total of 30 seats distributed like this:

- 3 soloist dressing rooms with tables, mirrors and washbasin for 4 people in each.
- 1 soloist dressing room with couch and chair for 2 people.
- 1 green room with kitchen sink, dishwasher, TV and chair for 16 people.



## Fly bars



Fly bars 1, 2, 5, 8, 11 and 13 (marked in green) are motorized (max. load 450 kg. spread evenly)  
Fly bars 6, 7, 9, 10, 12, 14 and 15 (marked in red) are manual by hand (max. load 215 kg. spread evenly)  
Fly bars 3 and 4 are manual by hand used for front covering and curtain, and cannot be used

## Audio equipment

---

### FOH Console:

1 x Soundcraft Vi3000 with Realtime Rack and  
Soundcraft Studer Vi Stagebox (48 inputs, 24 outputs,  
4 AES outputs)

### Main PA:

16 x Martin Audio MLAMini  
4 x Martin Audio MSX

### Ekstra subs:

2 x Martin Audio CSX218

### Monitor amps:

2 x QSC PLD4.5  
(8 sends)

### Monitor wedges:

8 x Martin Audio LE1200

### DI:

6 x BSS AR133 DI  
8 x LD Systems LDI Active 02

### Microphones:

1 x Shure Beta 52  
1 x Shure Beta 91  
6 x Shure SM 57  
4 x Shure Beta 58A  
2 x Shure SM 58  
5 x Sennheiser E 604  
2 x Sennheiser E 606  
4 x Røde NT5  
2 x AKG 535 EB  
2 x AKG C214  
1 x DPA d:factoll  
5 x DPA d:vote med diverse clips

### Stands:

10 x K&M small w. round base  
14 x K&M Large w. boom  
2 x K&M Windup

### Wireless systems:

2 x Shure ULXD4D  
1 x Shure AXT 900  
4 x Shure ULXD2 Beta 58A

## Ligthing equipment

---

### FOH Console:

1 x Avolite Pearl Expert  
1 x Avolite Touch Wing

### Dimmers:

2 x 12 ch. Electron Actor 716. dimmer (total of 24  
circuits) with patchbay on stage (stageright)  
2 x Avolite PowerCube PDU and dimmer (total of 36  
circuits)

### Conventional:

6 x ETC Source 4 575 jr. zoom profil  
4 x ETC Source 4 750 zoom profil  
4 x 6-cell 1000W PAR64-cp61  
8 x 1000W PAR64-cp61 floor cans  
5 x 2-cell blinders

### Movinglights:

8 x Martin Mac Aura  
6 x Martin Mac2000 performance

### Smoke:

1 x Swefog Duramax intellahazer 1k8

## Power

---

1 x 3x125 A CE (stageright)

Devided on stageleft, stageright and upstage is the following:

4 x 3x63 A CE

4 x 3X32 A CE

4 x 3x16 A CE

8 x 230 V

All outlets are paired 2 and 2, so do not calculate full load at all outlets.

## dB Limits

---

To ensure a healthy concert experience to our audience, and to comply with EU noise regulations towards our employees, we are enforcing a dB limit of 103 dB(A) averaged over 15 minutes (Leq 15 = 103 dB(A)).

## Special effects

---

Note that the use of fire and pyrotechnics are only allowed with a valid approval from the Danish 'Beredskabsstyrelsen'.

The use of confetti is allowed in Det Musiske Hus.